

FLEX ID2 DATASHEET (FU.FLEX2.001)


Description:

FlexID2 is the new generation of airborne ultrasound flexible rod, compatible with SDT200/270/340 and upcoming SDT devices. It is available with removable transducers, Ø16mm and Ø10 mm, screwed at its head. The rod is bendable to fit your needs.

The FlexID2 length is 545 mm (21.5"). It may be increased to 847 mm using the extension tube or up to 1377 mm using the telescopic pole.

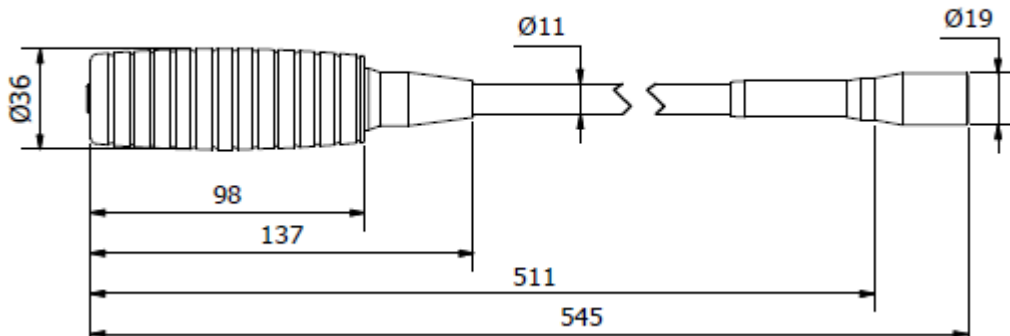


Specifications:

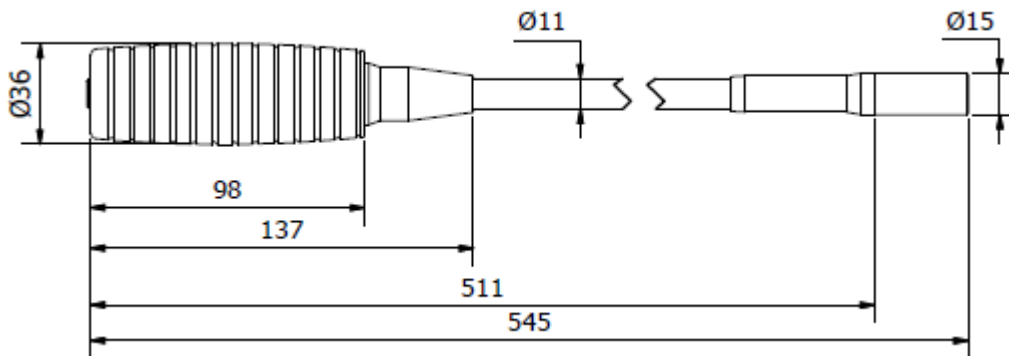
General		
Description		Airborne ultrasound sensor
Type		Removable resonance sensor Ø16mm (R16) Ø10mm (R10)
Compatibilities		SDT 340/270/200 SDT ULTRA/TIGHT/HATCH-Checkers
Certifications		EMC, ROHS (see DoC)
Center frequency	kHz	40 ± 1
Useful bandwidth (attenuation of 6 dB)	KHz	2.0 [38.4-40.4]
Sensitivity <i>At 40.0KHz; 0dB = 1 volt/Pa</i>	dB	-13 with Ø16mm -22 with Ø10mm considering built-in preamplifier
Typical total beam angle (- 6 dB)	°	55 with Ø16mm 72 with Ø10mm
*at 25 °C		
Built-in preamplifier	dB	+30
Environmental		
Operating temperature range	°C (°F)	-30 to 70 (-22 to 158), non-condensing
IP rating		40
Caution		Risk of injury when working in electrical environment. <ul style="list-style-type: none"> • Respect safety rules in place at your facility • Always wear proper protective clothing and use insulated tools when around electrical hazards
		
Mechanical		

Housing material		Head : POM, Delrin® Flexible: stainless steel + spiral steel, Kacelit coatings Handle : anodized Aluminium+ screw handle in PVC, Kraton
Dimensions	mm (in)	545 mm / 21.8 in 847 mm / 32.2 in with Extension Tube 1377 mm / 54.2 in with Telescopic Pool Handle
Weight	g (oz)	336 g / 11.8 oz 466 g / 16.4 oz with Extension Tube 604 g / 21.3 oz with Telescopic Pool Handle
Connector		Lemo 7 pins female

Mechanical drawings:

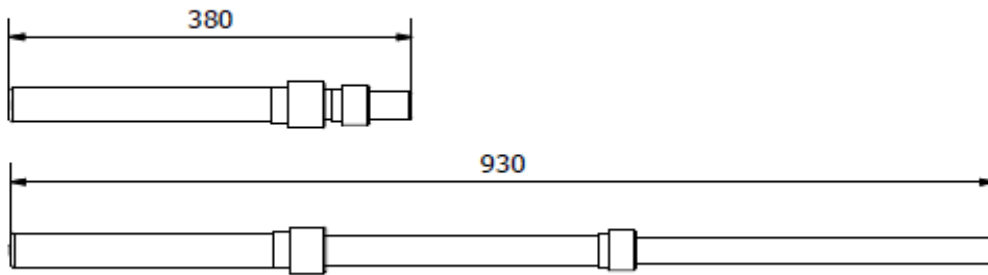


FU.FLX2.001--01 – FLeXID 2 with transducer Ø 16mm

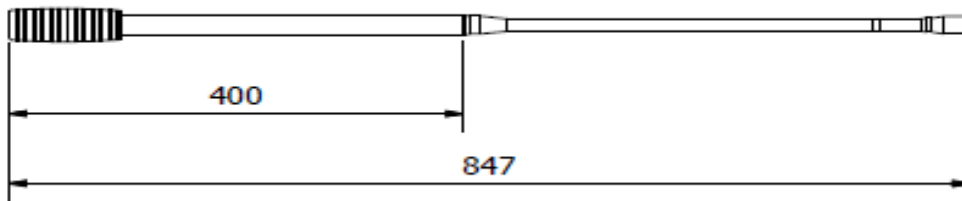
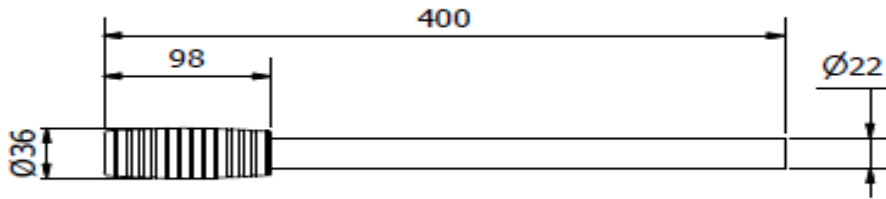


FU.FLX2.001--01 – FLeXID 2 with transducer Ø 10mm

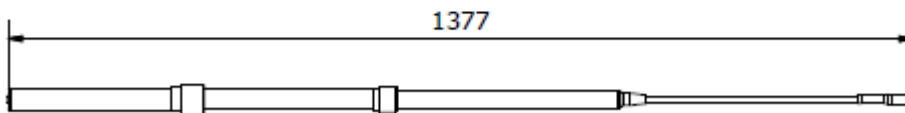
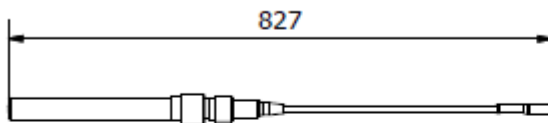
*The information herein is believed to be accurate to the best of our knowledge.
Due to continuous research and development, specifications are subject to change without prior notice.*



FU.TEP.001 - Telescopic Poolhandle (optional accessory)

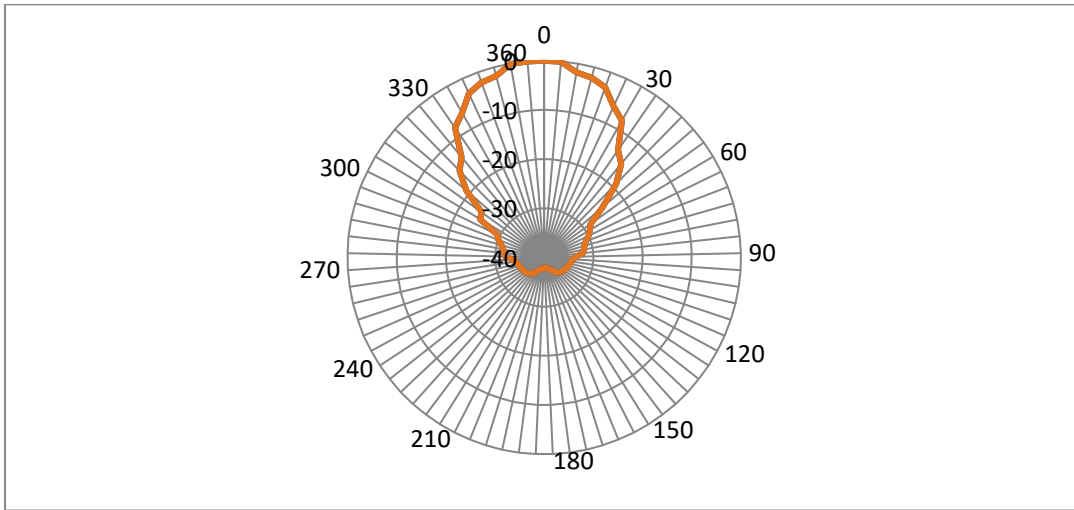


FU.FLX2.001--01 – FlexID2 mounted on the telescopic pole (optional accessory)



FU.FLX2.001--01 – FLeXID 2 with Extension Tube (optional accessory)

Beam angle:



Safety recommendations:

- Do not expose the equipment to rough handling or heavy impacts.
- Always read and follow the user manual.
- Opening the housing of the instrument may result in hazardous mishandling and voids warranty.
- The equipment should not be used in areas where there is a risk for explosion.
- Do not expose the equipment to high humidity or direct contact with water.
- All repair work must be performed by SDT or authorized service.
- Using any other headset or any sensor than the one supplied with the instrument can cause internal damage to the device

3	CMA 2021/06/04	New layout,	CGR
2	AKP 2017/07/19	New layout, additional picture, adding temperature range & material	CGR
1	AKP 2017/05/19	Original version	CGR
Ver.	Editor	Nature of modification	Verified