



SDT Contact Sensors Overview

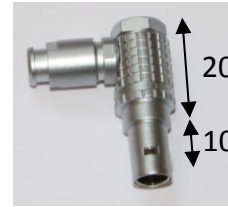
RS1NL100
FUSOND270-01



RS1NL300
FUSOND270-02



RS1NL500
FUSOND270-03



RS1T
FUSCRS3



Accelerometer cable
FUCABLSPLE7M8FA-1

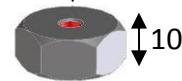


AC1
SISENSAMHS130

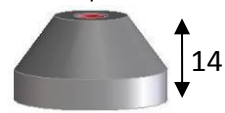


Stud M6
SISIENSAMHS130AC-ST06

Mounting Pad (10 pcs)
FUSEACMP1



Flat mag. foot
FUSEACMAG-01



Curved mag. foot
FUSEACMAG-02



Lube Adapter
FUSEACLUBE-03



Needle 133mm CP2
SA.CP2.MMF.002

K	GEL+ BDK	New SDT Layout	2015-05-19
J	JPD	Replace picture Accelero and needle by drawing	2013-06-27
I	TSA	Add Accel., M6 stud, Needle 133mm & AC1 cable	2012-10-02
H	TSA	Add sensor names	2012-10-02
G	TSA	Add axial dimensions (mm)	2012-10-01
F	TSA	Review mounting pad picture & code (10pcs)	2011-02-21
Rev.	Author	Nature of modification	Date