



SDT COMMONSense Tool Release notes

Current version: 1.0.2012

Main features:

- Set parameters of COMMONSense
- Set COMMONSense mode (Static – Dynamic)
- Set COMMONSense gain

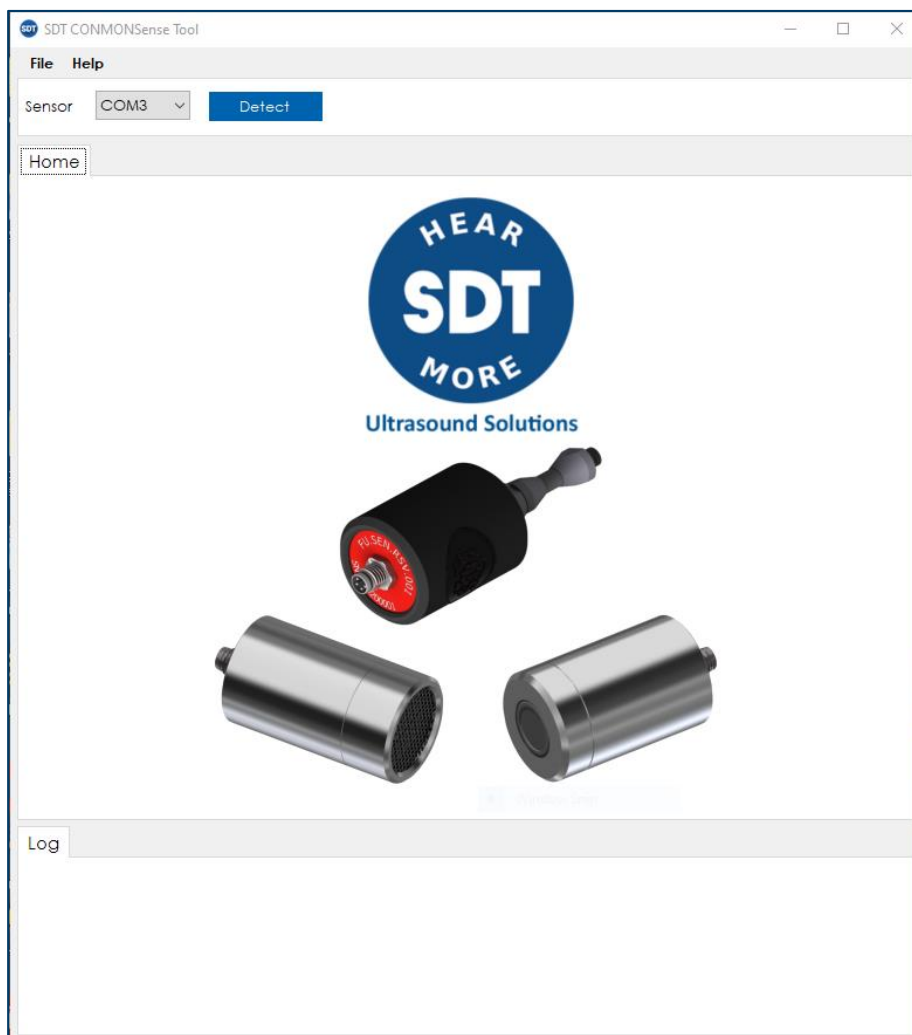
Supported operating systems:

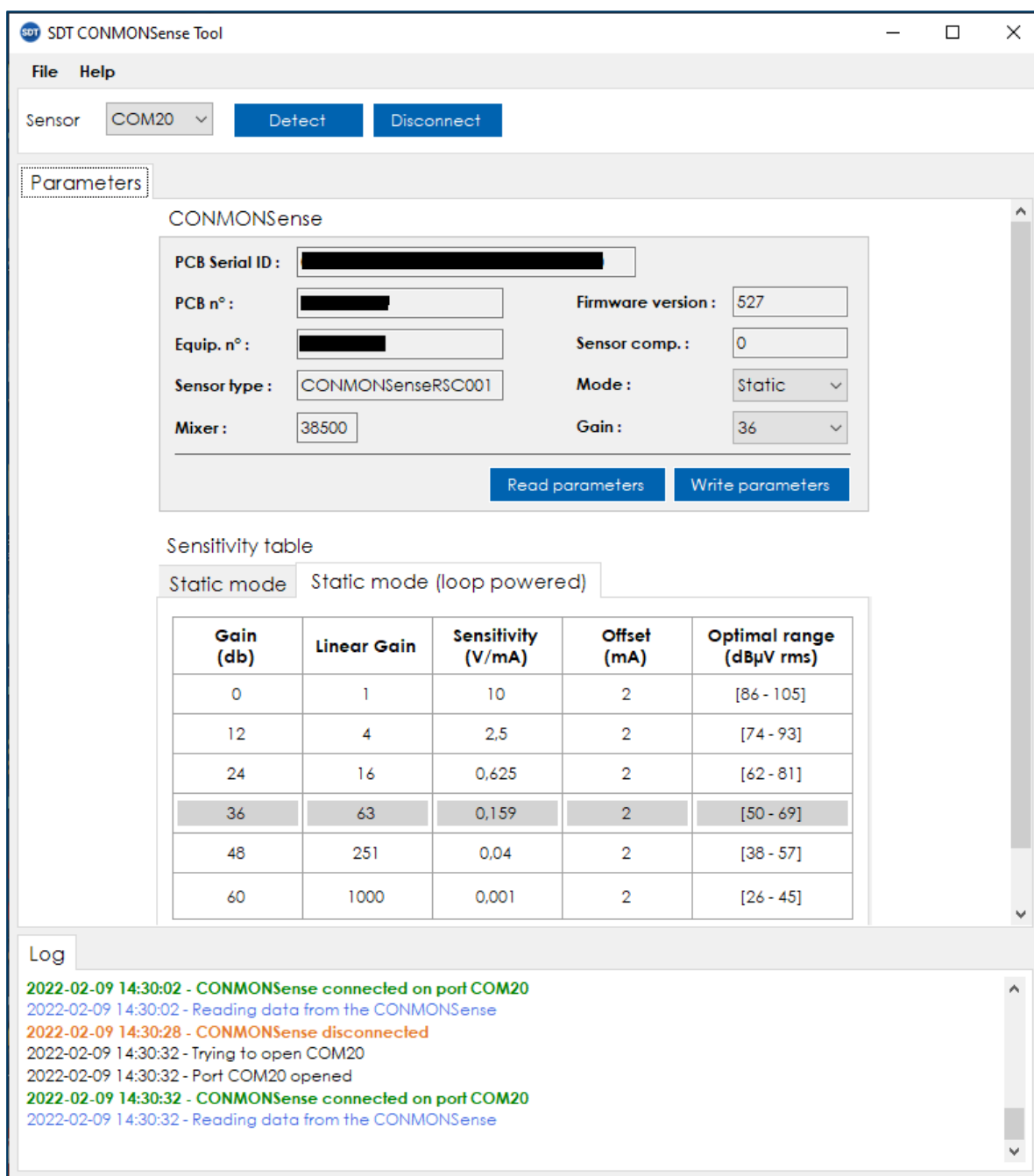
- Windows 7
- Windows 8
- Windows 10
- Windows 11

Supported architectures:

- 32 bit
- 64 bit

This software is intended for use by customers with a COMMONSense sensor.





Modification history

Version 1.0.2012 [released on 27th of October 2023]

- Added support for CONMENSENSE IEPE and associated parameters.

Version 1.0.1942 [released on 22th of June 2022]

- Added the possibility to download and install the driver if the installation via the software failed.

Version 1.0.1900 [released on 9th of February 2022]

- Changed the image of the home tab.
- Correction of typing error in sensitivity table.

Version 1.0.1898 [released on 4th of February 2022]

- First version released of software.