



How to install Ultranalysis Suite™ Base Setup

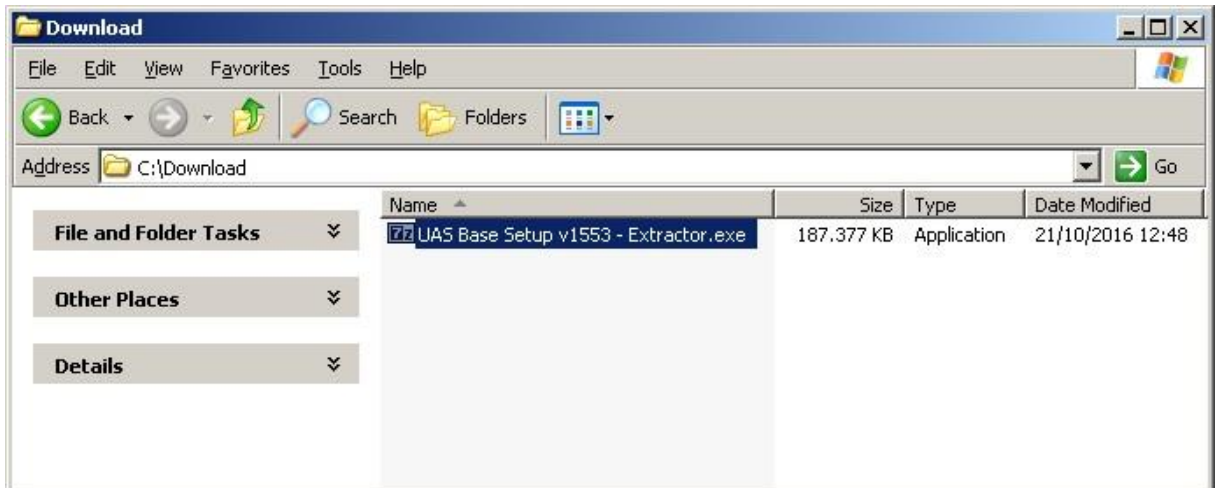
0.	Download Ultranalysis Suite™ Base Setup	- 2 -
1.	Extract Base Setup.....	- 2 -
2.	Run Base Setup.....	- 3 -
2.1.	.Net Framework.....	- 6 -
2.2.	Crystal Report.....	- 8 -
2.3.	PorstGreSQL	- 11 -
2.4.	Ultranalysis Suite™	- 15 -

0. Download Ultranalysis Suite™ (UAS) Base Setup

If you don't have it yet, you need to download "UAS Base Setup – Extractor.exe" file. It is available at this location:

<ftp://ftp.sdt.be/pub/Software/Ultranalysis Suite/UAS Base Setup v1553 - Extractor.exe>

1. Extract Base Setup



From your download folder ("C:\Download" is an example), double left click on the file "UAS Base Setup – Extractor.exe" to start the extraction of all setup files.

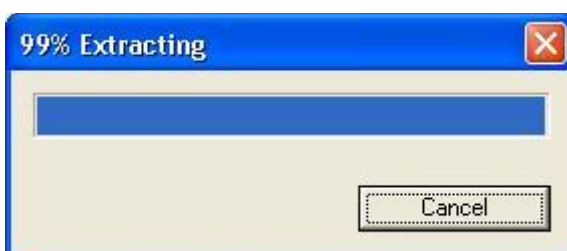
You should see this window:



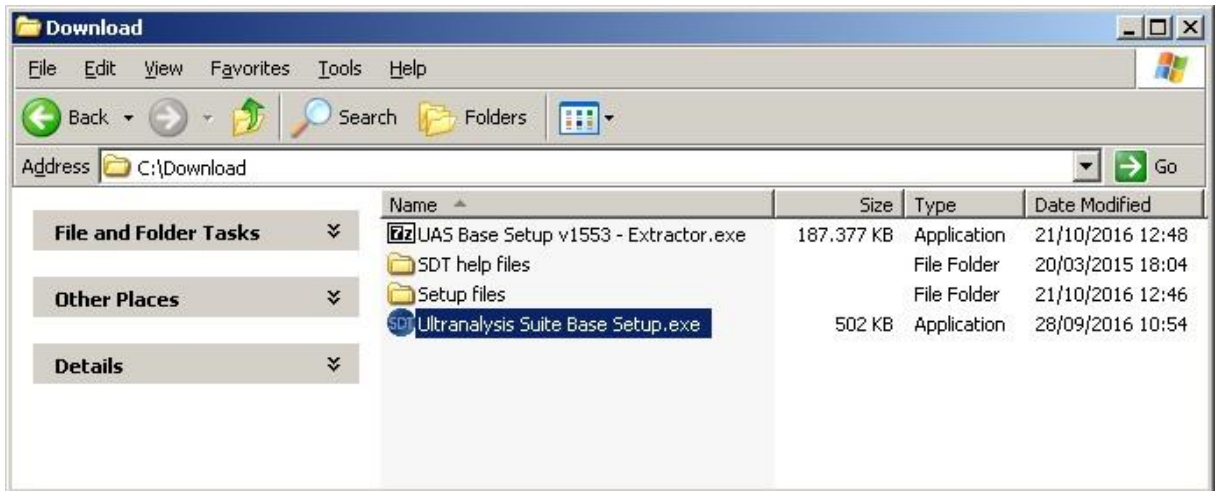
By default all files will be extracted at the same location as "UAS Base Setup – Extractor.exe" file; if you wish you may specify another location at your convenience.

Click the "Extract" button to start the extraction.

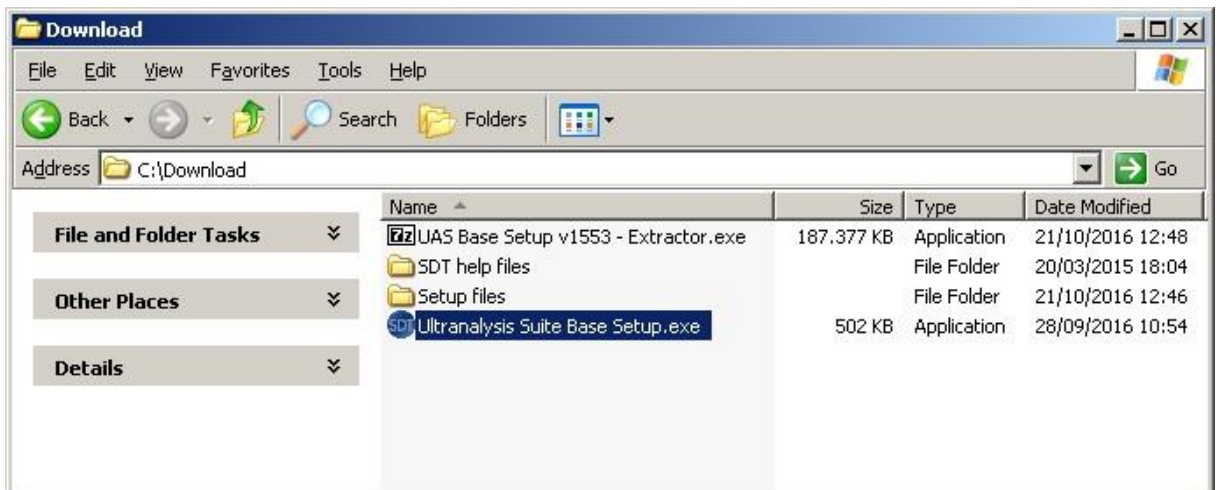
The progress bar will show you the extraction progress, please wait until it's finished.



When the extraction is finished, you should see (in the folder location you have specified) the same new files and folders as shown on the following screenshot:



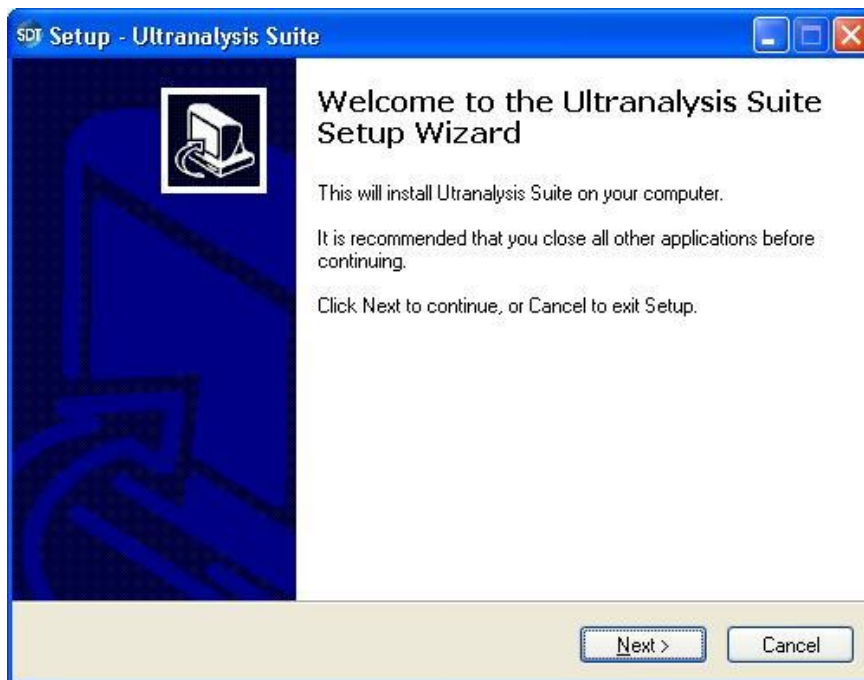
2. Run Base Setup



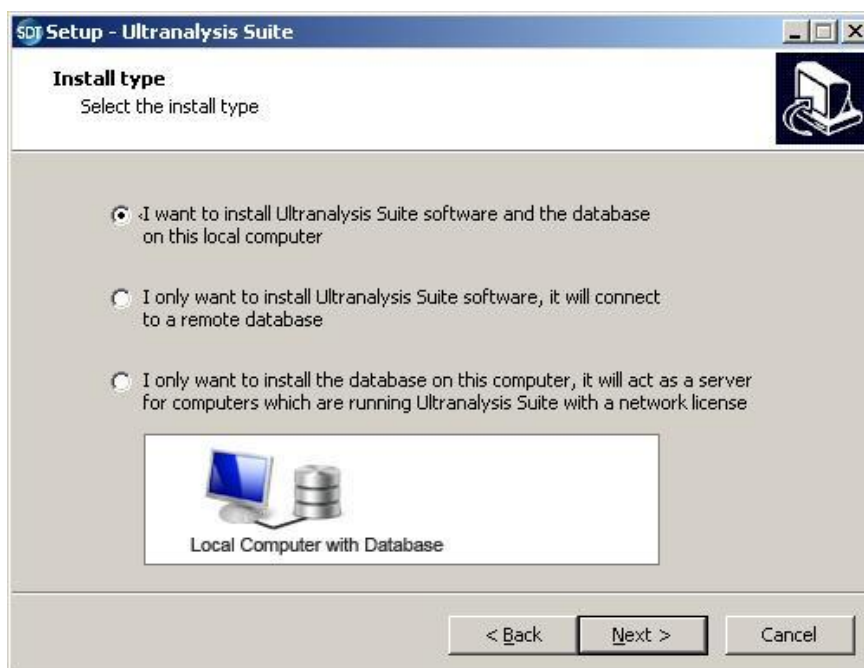
NOTE!! You must have administrator rights to proceed from here.

Double left click on the file “Ultranalysis Suite Base Setup.exe” to start Base Setup installation.

You should see the following window:

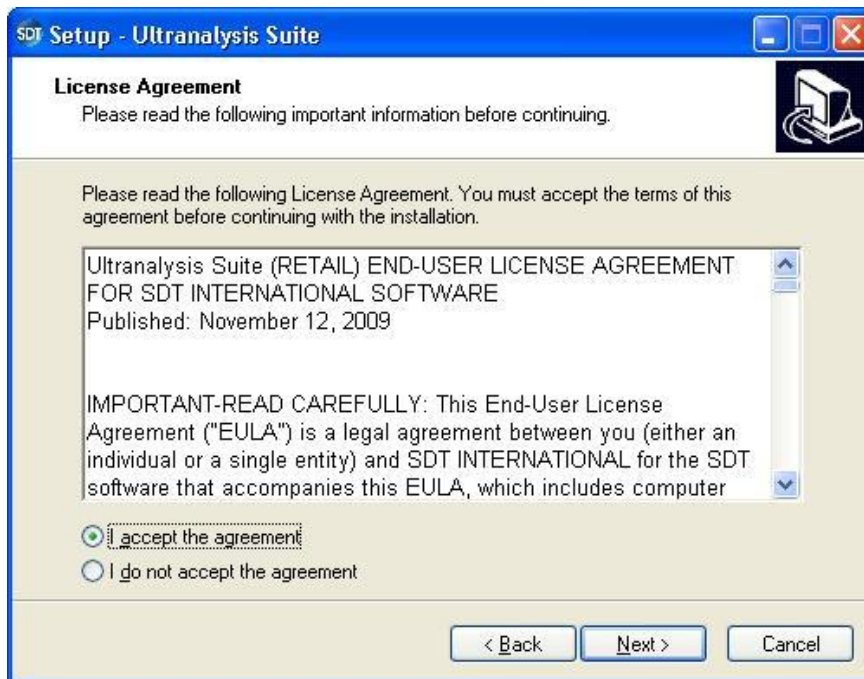


Click the "Next" button to continue.



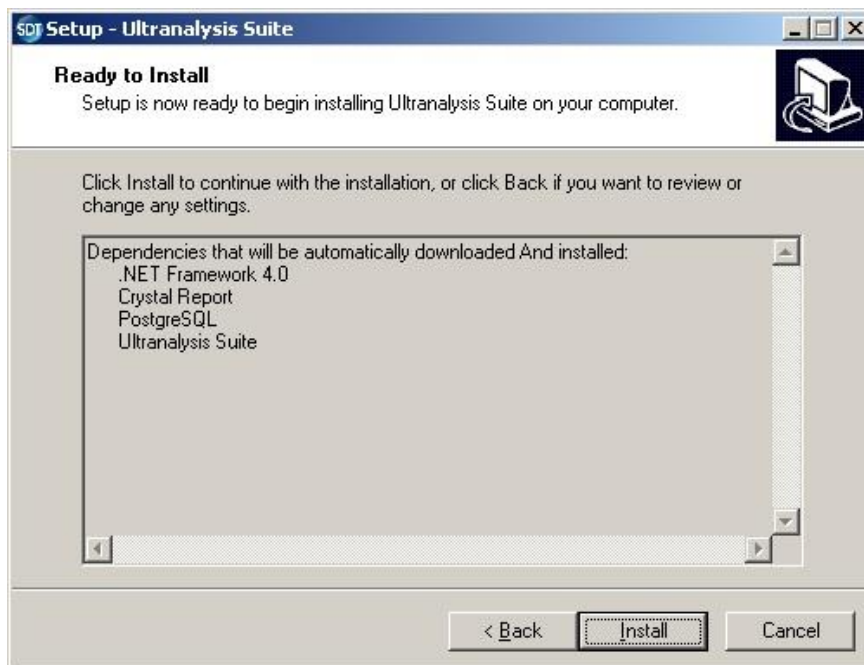
Select one of the three installation type which corresponds to your need.

Click the “Next” button to continue.



Read the End User License Agreement and if you agree with it, select “I accept the agreement”.

Click the “Next” button to continue.



This step will list all the components the Base Setup will install to your computer. Click the “Install” button to continue.

2.1. .Net Framework

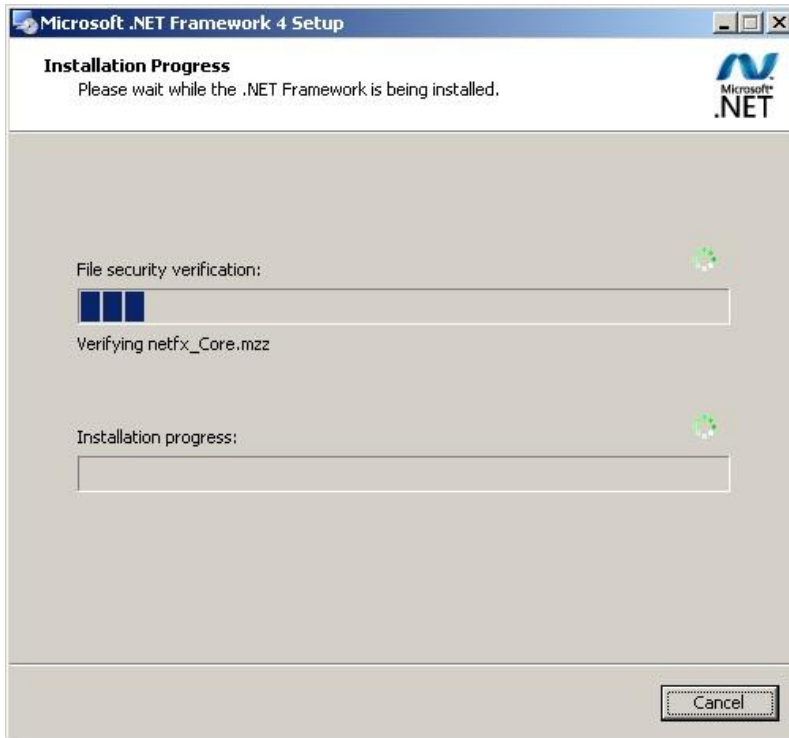
If the Base Setup was required to install .NET Framework, you should see the following window.

Depending on your computer's performance, it could take a few minutes.



Read the license terms and if you agree, select “I have read and accept the terms of the License Agreement”.

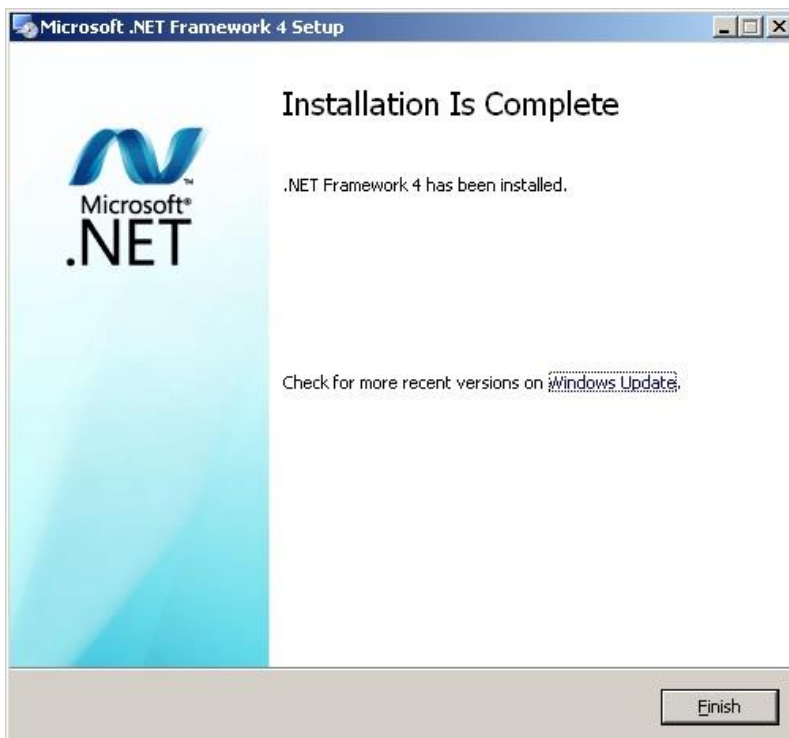
Click the “Install” button to continue.



Depending on your computer's performance, it could take a few minutes.

Wait until it's finished.

When .NET Framework installation is finished, you should see the following window:



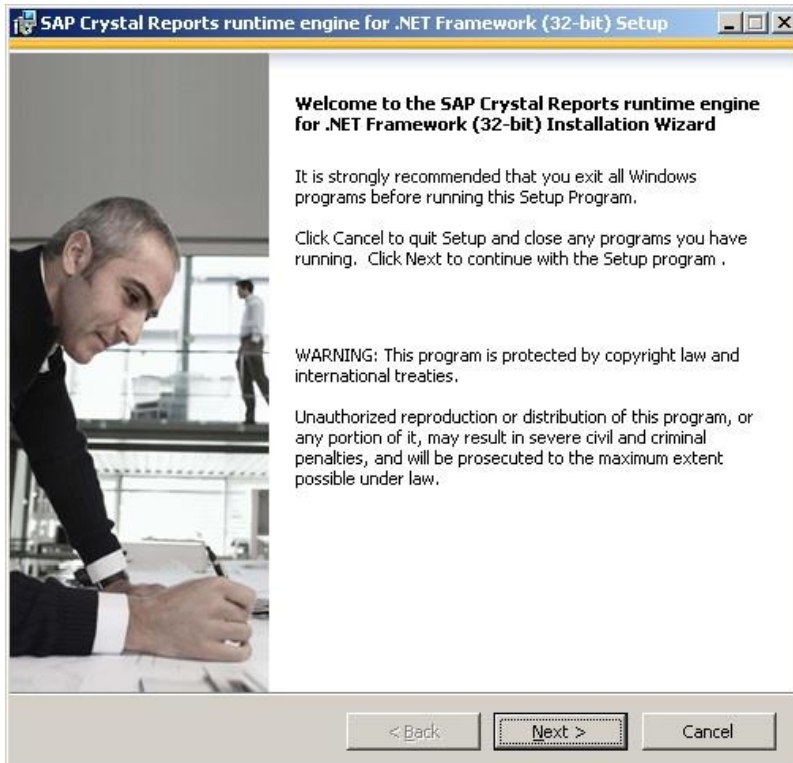
Depending on your operating system, you may be asked to restart your system. If so, please do.

Wait for your system to fully restart. Then double left-click the file "Ultranalysis Suite Base Setup.exe" to continue the installation.

Click the “Exit” button to finish .NET Framework installation and continue with the next step of our Base Setup.

2.2. Crystal Report

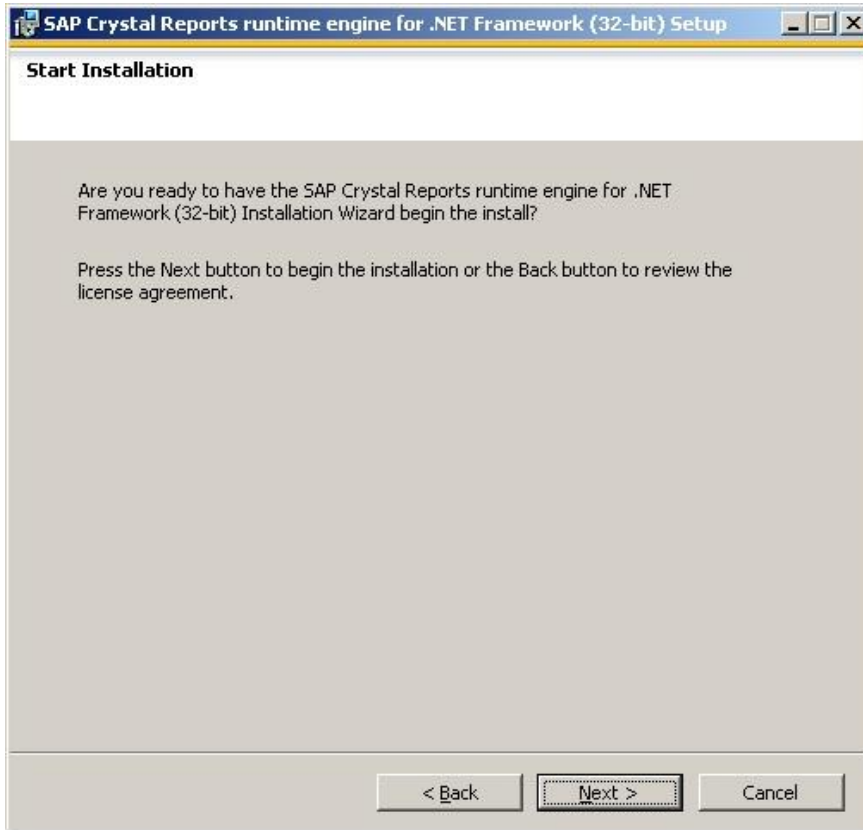
If the Base Setup needed to install Crystal Reports, you should see the following window:



Click the “Next” button to continue.



Read the license terms and if you agree, select “I accept the License Agreement”.
Click the “Next” button to continue.

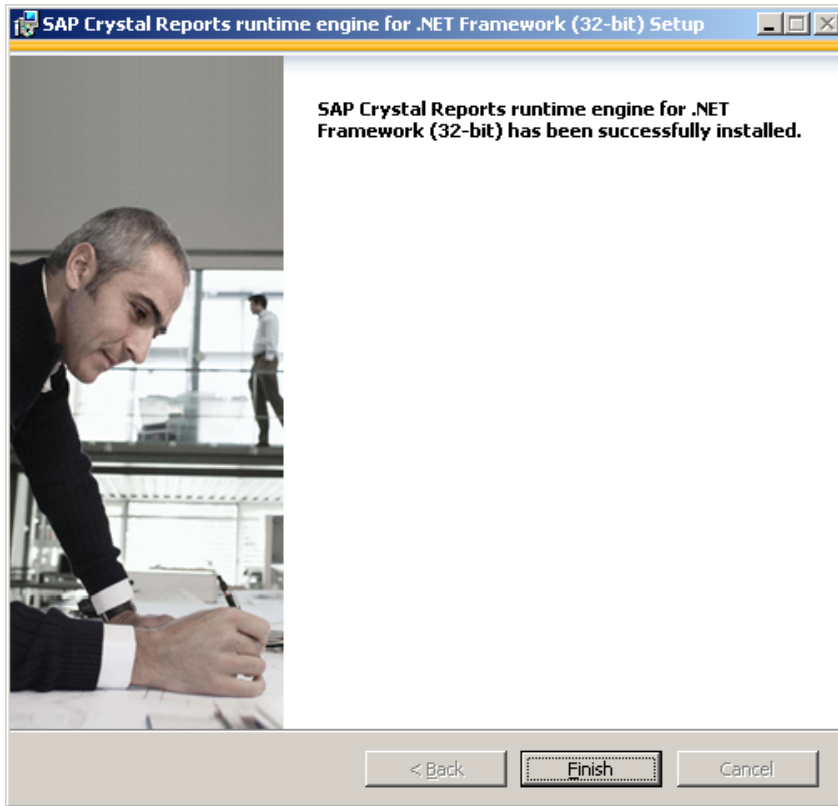


Click the “Next” button to continue.



Depending on your computer's performance, it could take a few minutes.

Wait until it's finished.



Click the "Finish" button to continue with next step.

2.3. PorstGreSQL

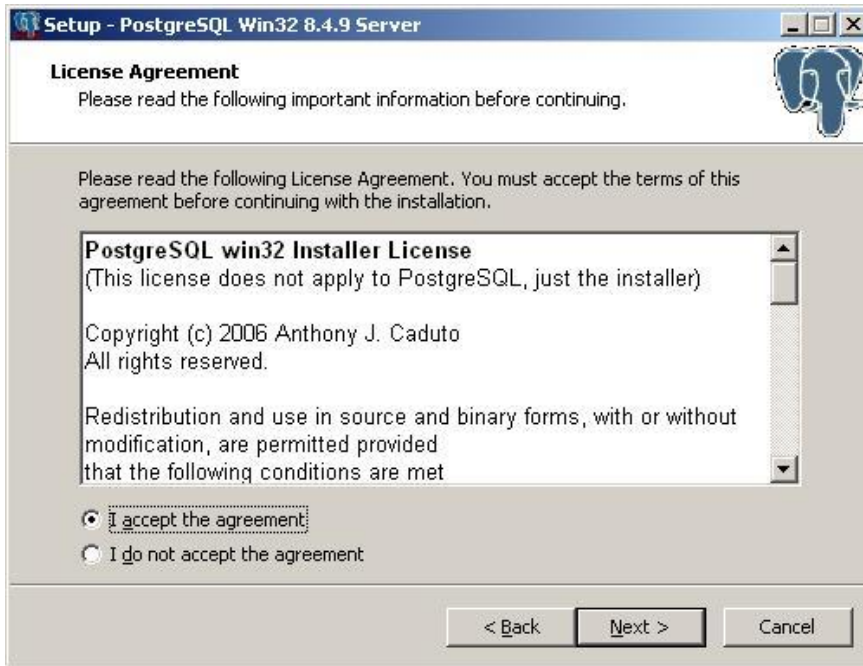
If the Base Setup needed to install PostGreSQL database, you should see the following window:



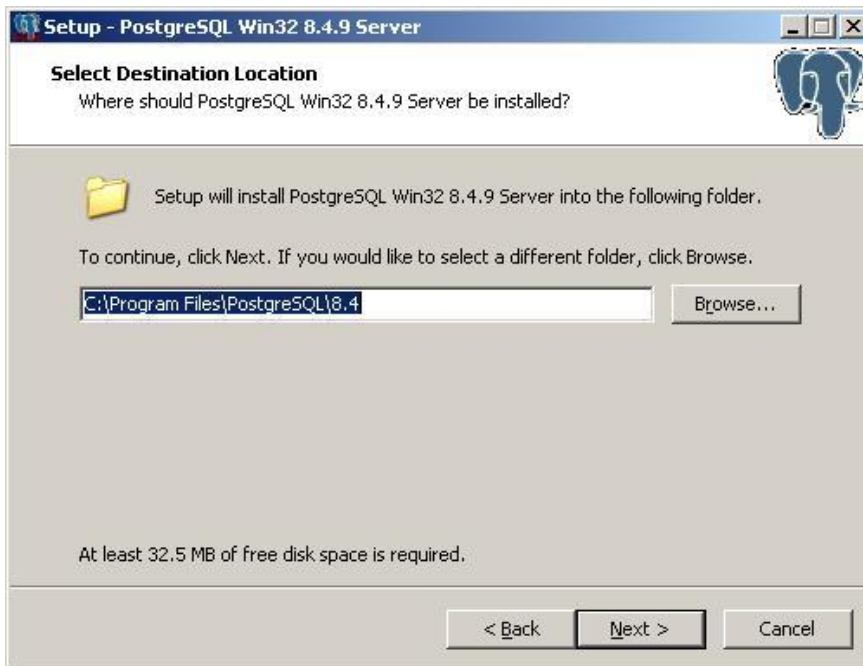
Click the "Next" button to continue.



Select "Express setup" (this is the recommended default choice) and click the "Next" button to continue.

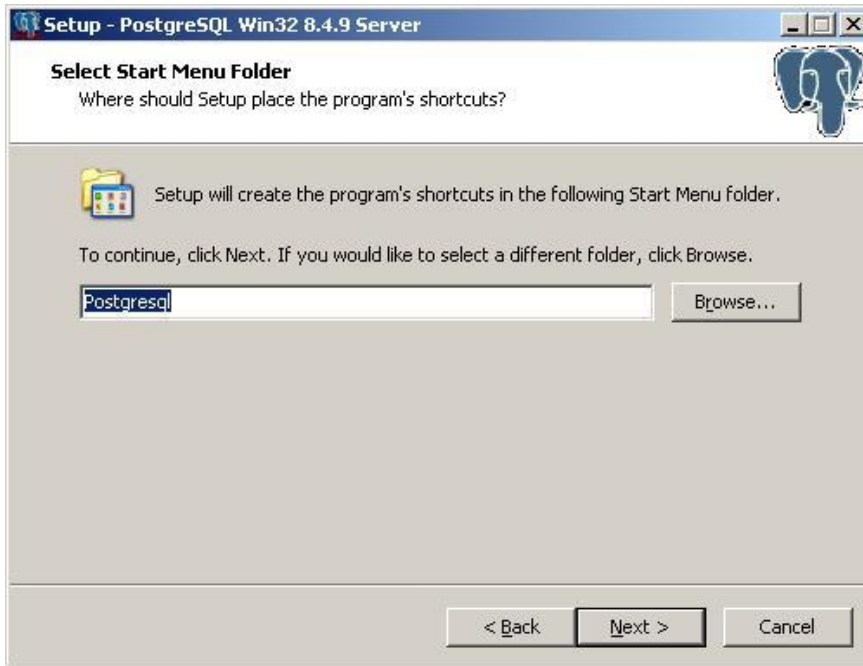


Select "I accept the agreement" and click the "Next" button to continue.



Select the Destination folder location.

Click the "Next" button to continue.

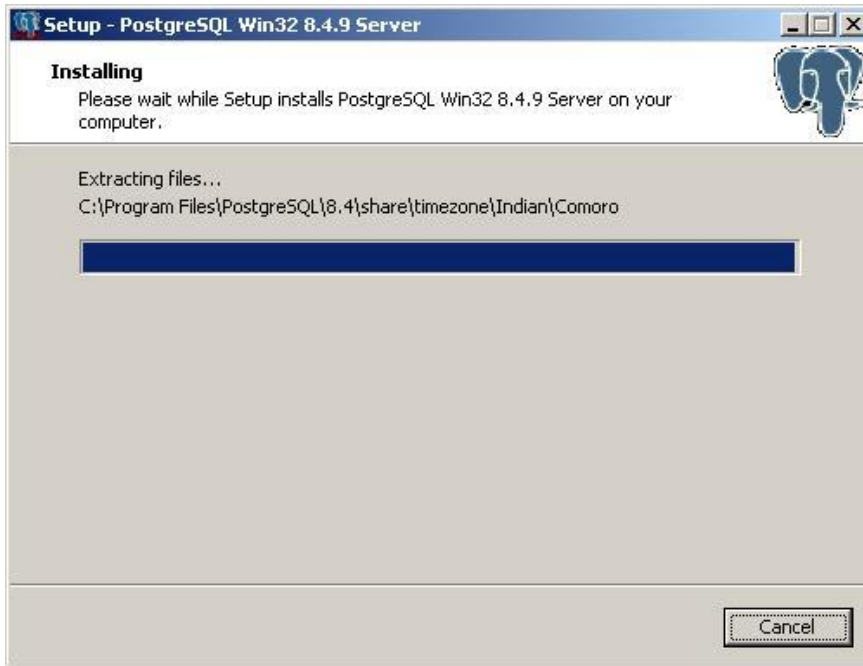


Select the start menu folder name and click the “Next” button to continue.



This window will list which component will be installed for the PostGreSQL installation.

Click the “Install” button to continue.



Depending on your computer's performance it could take a few minutes.

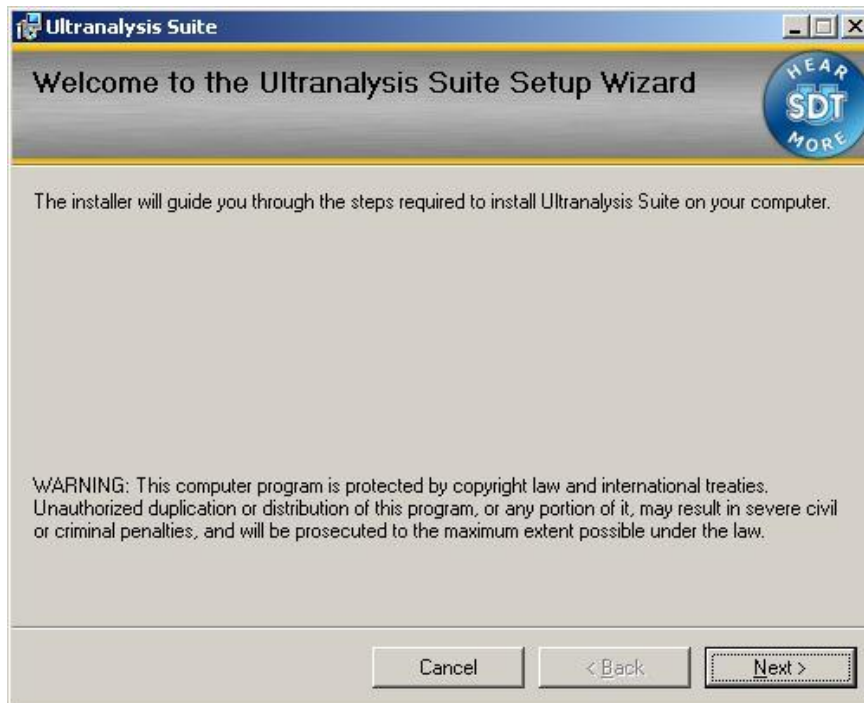
When PostgreSQL installation is finished you should see the following window:



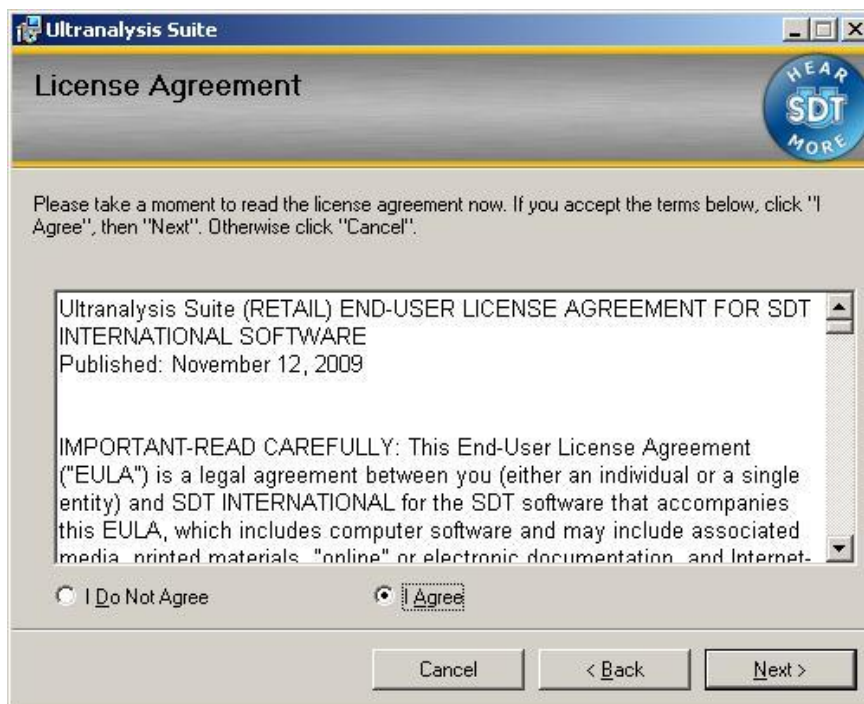
Click the "Finish" button to finish PostgreSQL installation and continue with our Base Setup.

2.4. Ultranalysis Suite™

The final part of Base Setup is the installation of Ultranalysis Suite. You should see the following window:

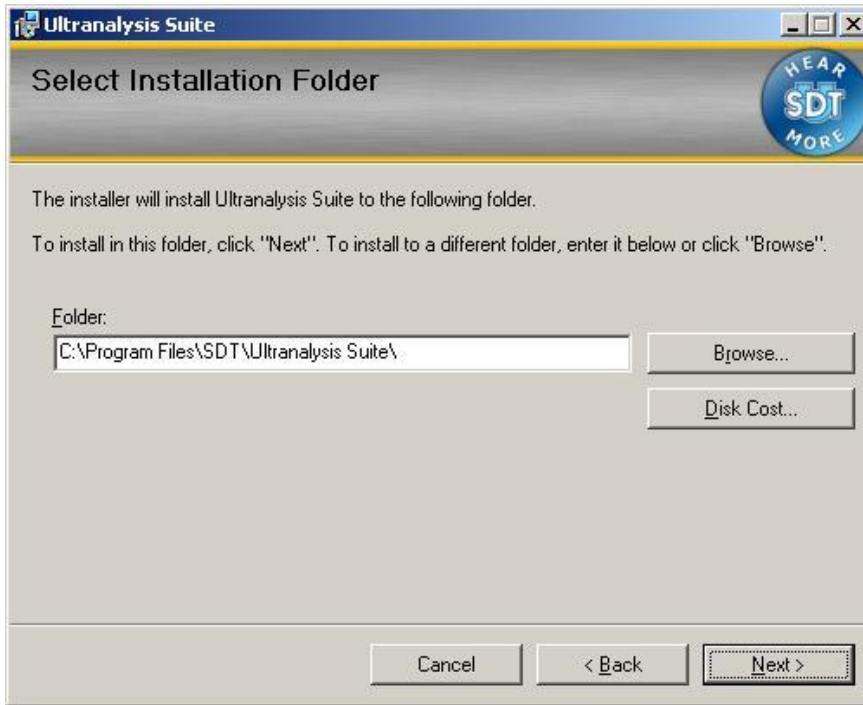


Click the "Next" button to continue.



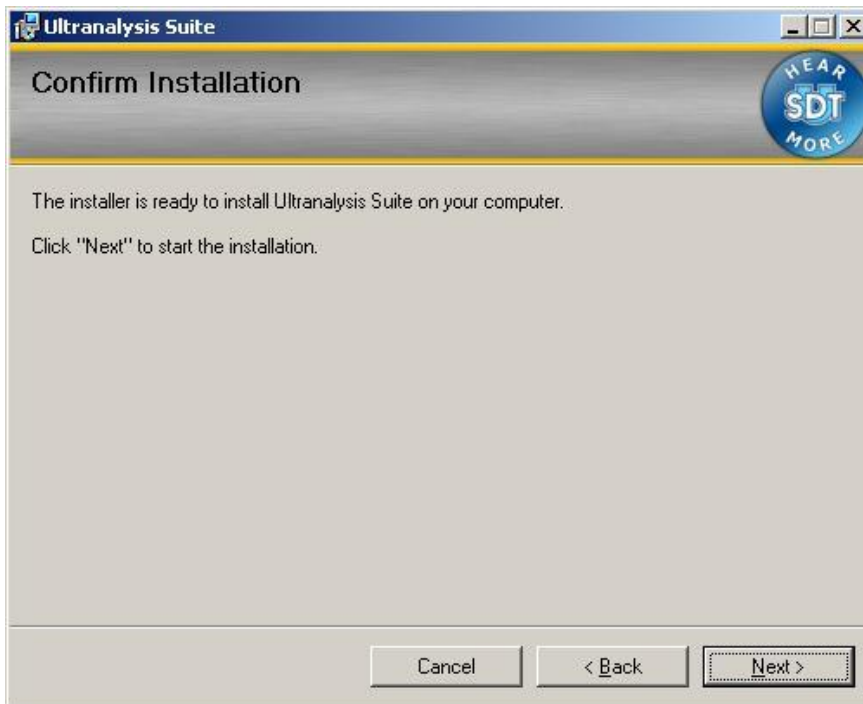
Read the End User License Agreement and if you agree with it, select "I Agree".

Click the "Next" button to continue.



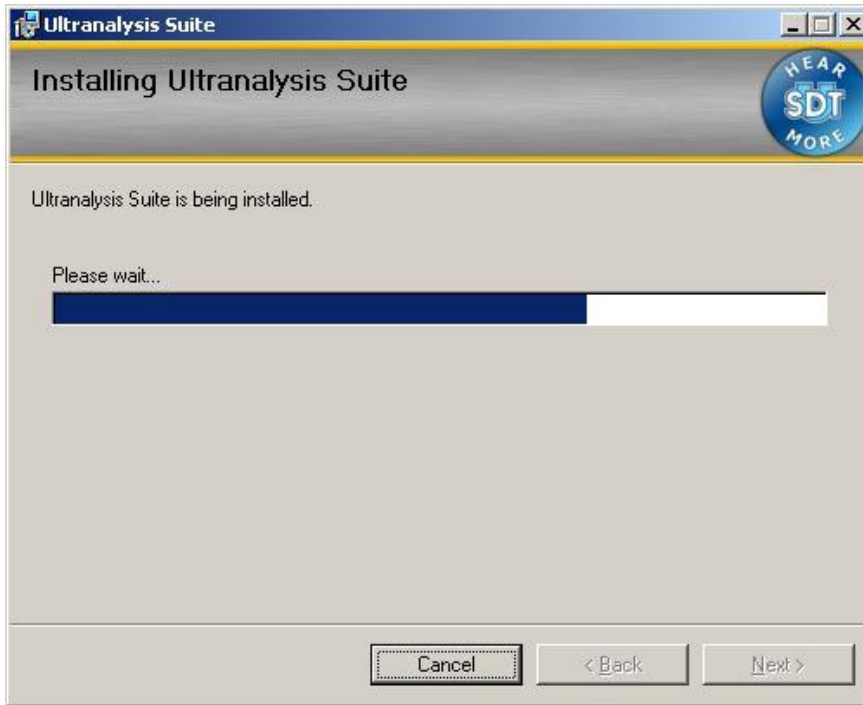
Select here the Destination folder location for Ultranalysis Suite™.

Click the “Next” button to continue.



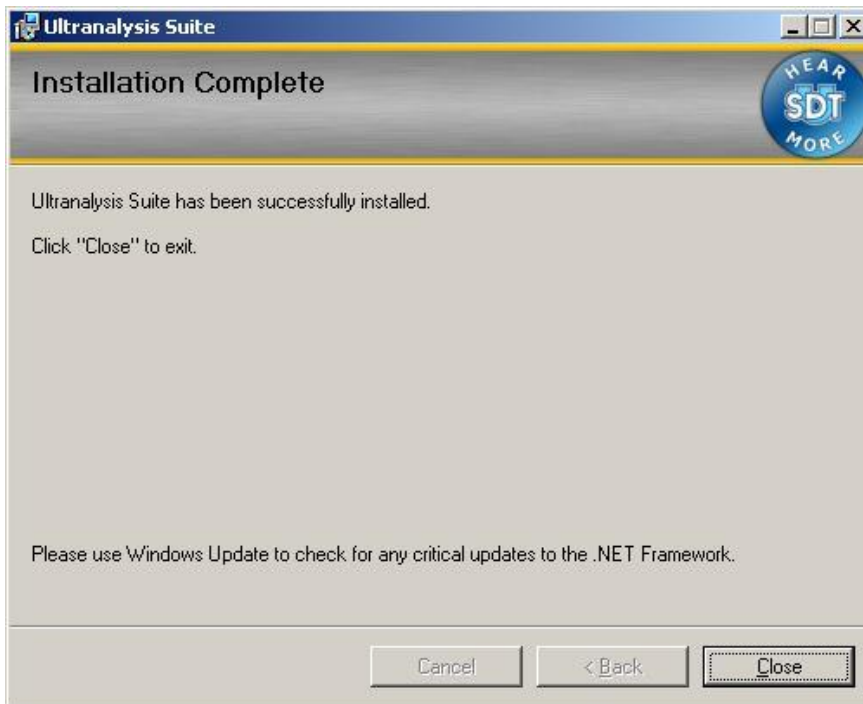
This window will list which component will be installed on your system.

Click the “Next” button to continue.

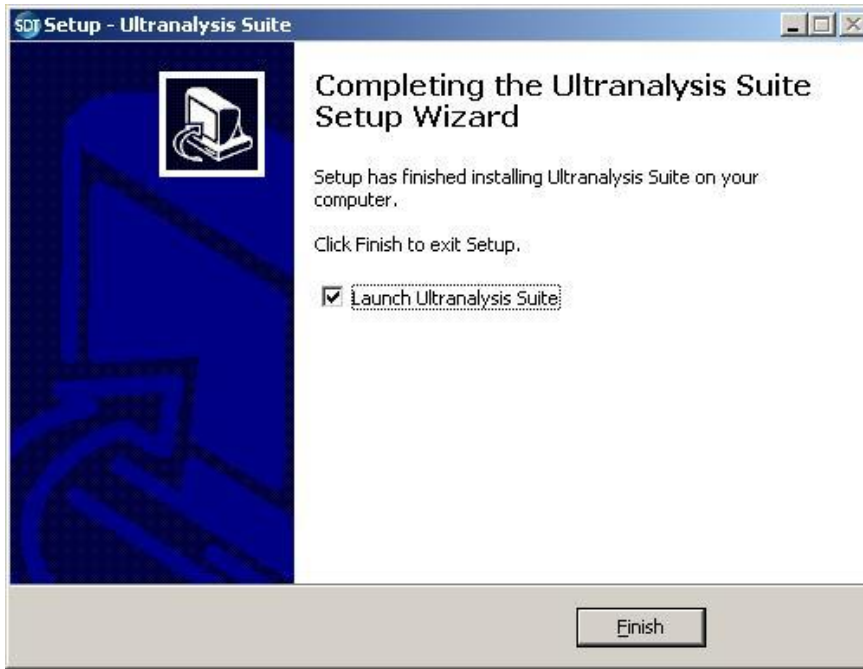


This window will show you the installation progress of Ultranalysis Suite™.

When it's finished, you should see the following window:



Click the "Close" button to finish Ultranalysis Suite™ installation.



That last window allows you to launch directly Ultranalysis Suite™ (by selecting “Launch Ultranalysis Suite”)

Click the “Finish” button to finish Base Setup.