



# CRY SOUND

## CRY8120 Series



### Advanced Acoustic Imaging Camera

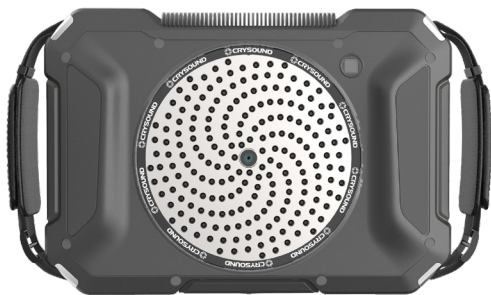






Experience next-level industrial inspections with the **CRY8120 Series Acoustic Imaging Camera**: leading the way in reliable technology for leak detection, real-time electrical discharge analysis, and thorough mechanical fault diagnosis.

## Raising Performance Standards with Unmatched Precision and Sustainable Innovation

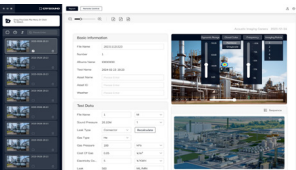


Ultrasound Sensor Array 200 Digital MEMS



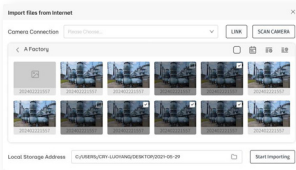
Optional Thermal Imaging Camera Module

## Reporting Software



### Real-Time Report Preview and Editing

- The reporting software of the CRY8120 Series enables real-time preview and editing of reports.
- Users can instantly view results as they edit, ensuring consistency with the final exported report.



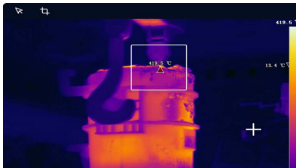
### Effortless Data Import via Wi-Fi

- Seamlessly import data from the acoustic imaging camera to your PC via Wi-Fi.
- When connected to the same network, the reporting software accesses stored images and videos.
- Users can select desired media in the preview window and import them to the PC with a simple click to generate detailed reports.



### Comprehensive Off-line Editing Capabilities

- Enjoy full off-line adjustment and editing capabilities with the reporting software.
- Modify recorded parameters such as dynamic range, frequency, and imaging points without the need for an internet connection.
- This feature allows for thorough analysis of recorded images to identify and address issues, whether in the field or in the office.



### Multimode Display of Acoustic and Thermal Images

- Experience enhanced insights with the optional thermal camera module available with the acoustic imaging camera.
- The software displays and reports both acoustic and thermal parameters on a single interface, providing a multidimensional view of the inspection data.

### Detection

- Accurately detects gas leaks, electrical discharges, and mechanical faults.
- Covers a wide frequency range: 2 kHz to 100 kHz.

### View

- Optional thermal camera module for infrared data.
- Split-screen and thermal view options for comprehensive analysis.

### Data Processing

- Fast processor for real-time data analysis and PRPD charts.
- Wi-Fi connectivity for easy data transmission and remote report generation.

### Rugged

- IP54: Lightweight and durable, withstands harsh environments.
- Operates from -20 °C to +50 °C, withstands drops up to 1.2 meters.

### Sensors

- Utilizes a 200-channel MEMS microphone array.
- Detects leaks at twice the distance of previous models.

### User Interface

- 8 inch touchscreen display with high resolution (1920 x 1200 = 13 million pixels), 6X digital zoom and 600 nits brightness.
- Intuitive interface for easy use in any lighting condition.

### Functions

- Focus function enhances detection of minor leaks and discharge identification.
- Steady state function for improved imaging stability and anti-interference.

### Power Management

- Removable battery provides up to 5 hours of continuous use.
- Optional second battery extends operation to 10 hours.



#### CRY8124

Acoustic Imaging Camera



#### CRY8125 EX

Acoustic Imaging Camera  
IECEX version



#### CRY8124 Pro Kit

Acoustic Imaging Camera  
+ LEAKChecker

# Optional Accessories



## Thermal Imaging Camera Module

- Available in 384 x 288 (IA1301) and 640 x 512 (IA1302) resolutions.
- Compatible with the CRY8120 Series Acoustic Imaging Camera.



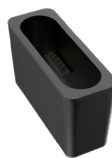
## Smart Battery Pack

- Integrated LED state of charge (SOC) indicator.
- Provides safety protections: overcharge, over-discharge, overcurrent, overtemperature, and short circuit.



## Ultrasound Generator

- Calibrates the positioning accuracy and sound pressure level (SPL) of the acoustic imaging camera.
- Simulates gas leaks and partial discharges.



## Smart Battery Charger

- Take advantage of the battery charger as a charging alternative to the USB C cable to be plugged into the camera.
- Full safety protections: over voltage, over current, and reverse connection protection.

Acoustic Specification		General Specification	
Microphone array	200 channels MEMS microphone	Size	270*190*51 mm (10.6*7.5*2.0 inches)
Frequency range	2 kHz-100 kHz	Weight	1.4 kg (3 lbs)
SPL range	28-132 dB	Wi-Fi	802.11a/b/g/n/ac
Minimum detectable leak	10 m 2.7 bar 0.0029 L/min 0.5 m 1.9 bar 0.0028 L/min	Bluetooth	BT 5.2
Test distance	0.5 m-200 m	GNSS	GPS+BDS+GLONASS+GALILEO+QZSS
Camera		Operating temp.	-20 - +50 °C, 10 - 95%, no cond.
Camera FOV	66°	Storage temp.	-20 - +70 °C, 10 - 95%, no cond.
Focal length	4.3 mm (0.17 inches)	IP rated	IP54
Camera pixel	13M pixel	Storage size	64G internal, 64G external TF card
Digital zoom	1x - 6x	Data format	.jpg (picture), .mp4 (video), .wav (audio), .cdat (data)
Fill light	LED*4	Video length	10 minutes
Display		Data export	USB-C, Wi-Fi, TF card
Resolution	1920 *1200	Warranty	2 years
Size	8 inches	Certificate	
Touch screen	Capacitive touch screen	Safety	IEC 61010-1
Brightness	600 nits, support auto and manual adjustment	EMC	IEC 61326-1
Software		Vibration	2g, IEC 60068-2-6
Function	Multi-point imaging, directional focus, distance measurement, leak volume estimation, PRPD spectrum, partial discharge type recognition, picture labelling, report export, and etc.	Drop test	1.2 m (4 ft)
Battery		Hardware port	
Battery capacity	6600 mAh @7.2V	USB-C1	USB 3.0 for charging, HDMI, data export
Battery type	Smart battery with indicator, replaceable	USB-C2	USB 2.0 for data export, USB sensor
Battery life	Up to 5 hours	3.5 mm audio jack	Headphone output
Languages		TF card slot	External storage
Chinese, English, Korean		Analog input	4 channels, 20 - 100 kHz IEPE, phantom power supply

Available only in Europe and French-speaking African countries.

## SDT Mission:

SDT provides ultrasound solutions that help our customers gain a better understanding about the health of their factory. We help them predict failures, control energy costs, and improve product quality while contributing to the overall reliability of their assets.



## SDT International s.a./n.v.

Bd de l'Humanité, 415  
B-1190 Brussels - Belgium  
Tel: +32(0)2-332 32 25  
Email: info@sdtultrasound.com