



SDT270

Measure Ultrasound, Vibration, RPM and Temperature in one box

- 4 Condition Indicators (RMS, Max RMS, Peak, and Crest Factor).
- Two Channel Inputs for sensors and accessories.
- Intrinsically safe version available for potentially explosive environments.
- Record clear, accurate, scaled, comparable Dynamic data in a wave format.
- Upgradeable firmware to flexibly grow with your program.
- Device and sensors are calibrated to ensure consistent, repeatable performance.



SDT340

Inspect, detect, measure, trend and analyze asset health.

- On-screen time signal, spectrum, split screen view, and icon navigation.
- Signal analysis based on the four Condition Indicators (RMS, Max RMS, Peak Value and Crest Factor).
- Experience enhanced impact detection with focUS Mode up to 256k sample rate.
- Pan and expand your time signal or spectrum. List the highest values to improve in-field diagnosis.
- Record time waveform data up to 10 minutes in duration with enhanced signal data.
- Interoperability of sensors such as Ultrasound Contact, Ultrasound Airborne, Accelerometer, build-in Infrared Temperature and Tachometer.



LUBExpert

An ultrasound solution to manage your acoustic lubrication and condition monitoring program.

- LUBExpert maintains a database of all your assets including bearing type and dimensions.
- It removes the guesswork by automatically calculating the stabilization time between grease pumps.
- The workflow inherent in LUBExpert restores order and discipline to your lubrication program.
- LUBExpert reminds you to bring the right grease type, gun, and quantity for the day's lube tasks.
- With the Dynamic Option, you'll reduce data collection time while increasing the efficiency and communication between the lube and condition monitoring teams.

CRY SOUND

Advanced Acoustic Imaging Camera



- Ultrasound Sensor Array 200 Digital MEMS.
- Accurately detects gas leaks, electrical discharges, and mechanical faults.
- 8-inch display with 1920 x 1200 resolution and 600 nits brightness.
- Custom templates and widgets: PRPD spectrograms, time domain charts, and thermal images.
- Wi-Fi connectivity for easy data transmission and remote report generation.
- Removable battery provides up to 5 hours of continuous use.

The Checkers Range

Ultrasound detectors for every application and budget.



- LEAKChecker: Find compressed air and vacuum leaks.
- TRAPChecker: Assess the condition of traps and valves.
- LUBChecker: Optimize bearing lubrication.
- TIGHTChecker: Verify the tightness of closed volumes.
- HATCHChecker: When hatch cover tightness matters.
- ULTRAChecker: Check everything.



A turnkey Condition Monitoring solution that combines the versatility of ultrasound, vibration analysis, standard communication protocols, and integrated trending and analysis software.

- VIGILANT unit available in two configurations (Permanent or Mobility).
- Designed for the SDT COMMONSense ultrasonic sensor (RSV).
- Extended compatibility to standard sensors (IEPE/ICP accelerometer, tachometer, temperature).
- 8 channels of dynamic acquisition (high sampling rate).
- 4 additional channels (low sampling rate).
- On-board secured webserver included for configuration and visualization.
- Compatible with most industrial communication standards.



Intelligent condition-based ultrasonic lubrication.

- Up to 8 analog inputs (AI) compatible with RSC.101 TRUE 4-20 mA.
- 8 relay outputs (RO) configurable to drive electromechanical lubricators.
- 2 relay outputs (RO) for alarms.
- Continuous monitoring of ultrasonic RMS and T° (static measurements).
- Lubrication strategy based on multiple criteria (refueling modes and trigger thresholds).
- Intuitive LUBExpert ON-GUARD Web Server installed in a PLC.
- Data available with MODBUS TCP.



Online4US QC

Quality control in production, ultrasonic leak testing.

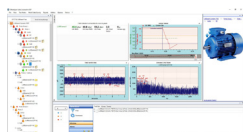
- Synchronized or continuous measurements, when certain conditions are reached, or periodic.
- Up to 32 measurement channels for open or contact ultrasonic sensors.
- Digital inputs for starting and stopping the measurement cycle.
- Digital outputs for transmitting the test result part good / part bad.
- RS232/485 and Ethernet interfaces for measurement and test result transmission.
- Compatible with wired and wireless industrial communication gateway.



COMMONSense

Stand-alone sensors with standard 4-20mA and 0-10V output (Contact, Open and Closed Airplane).

- Static or dynamic output with built-in amplification stages and built-in analog filters.
- Non-volatile memory to save configuration and restore sensor state/mode.
- Hardware calibration.
- On-board ambient T° measurement (via serial communication).
- Digital I/O communication for easy use.
- Serial communication for advanced use.



UAS3

UAS3 is a versatile software for the management, trending, and analysis of ultrasound and vibration data.

- Hierarchical tree structure with seven levels. Tree structures grouped into data folders.
- Unlimited tree structures and data folders.
- Expansion/compression of any level node.
- Access to third-party data with any SQL query tool.
- Bearing Toolbox for bearing defect analysis (over 50,000 models included).